

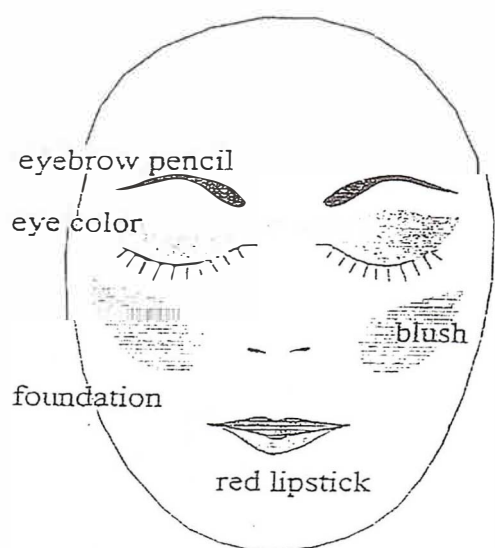
# Nutcracker

## Hair and Makeup Requirements

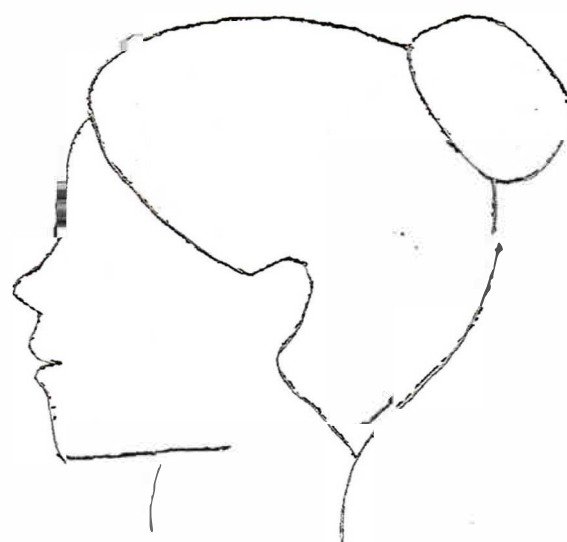
All hair and makeup should be done at home before pictures, dress rehearsals, and all performances. Exception: Makeup for clowns, doll, soldiers and buffoons will be done by the hair & makeup committee. Mini dolls and party girls will be checked by the hair & makeup committee, but should be done at home.

***Please refer to the chart for part specific hair and makeup requirements.***

Traditional Makeup:



Traditional Bun:






\* Eye color should be neutral, not bright blue or green. Lip *gloss* should not be used.

\*Hair nets over buns will keep loose ends from escaping and the bun neat.

Part	Makeup	Hair
Waltz Ornaments Snow Spanish Reed Flutes Sugar Plums Maids Candy Canes Cookies Chinese	Traditional makeup	Traditional bun at the crown of the head

## Hair and Makeup Requirements

Part	Makeup	Hair
Clara Party Girls Angels	Traditional makeup	Hair should be pulled up on sides to form a half pony tail with the rest down in ringlets. <b>(Angel's should leave curlers in and committee will take them out)</b> 
Party Boys Prince Fritz	Foundation, blush, eye brow pencil, eyeliner and light lip color - no mascara, eye color or red lipstick	
Gingerbread Cupcakes	Traditional makeup	Hair should be placed in a bun directly on the top (not crown) of the head. 
Mini Dolls	Refer to similar part makeup requirements (i.e. Chinese mini doll refer to Chinese)	Refer to similar part hair requirements (i.e. mini soldier refer to soldier hair)
Chinese	Traditional makeup	Traditional bun at the crown of the head with braid wrapped around the bun
Arabian	Traditional makeup with eyeliner applied on bottom and upper lid slanting <b>up</b> at outer corner	Traditional bun at the crown of the head
Soldiers - red and blue	Should arrive with clean, dry faces and no makeup (except mascara - if they choose)	Hair should be placed in a bun directly on the top (not crown) of head 
Mice	No makeup requirement	Hair should be placed in two French braids and pinned close to the head
Baby Mice Oriental Servants	Traditional makeup	Hair should be placed in two French braids and pinned close to the head
Clowns	Dancers should arrive with clean, dry faces and no makeup (except mascara - if they choose)	Hair should be placed in two French braids and pinned close to the head
Doll	Traditional makeup - committee will provide cheeks, lips and eyelashes	Traditional bun at the crown of the head
Buffoons	Dancers should arrive with clean, dry faces and no makeup	Hair should be placed in two French braids and pinned close to the head
Ladies in Waiting	Traditional makeup	Hair should be parted straight down the middle with two buns on the sides of the head. 
Pages	Traditional makeup	Hair should be placed in a French twist on the back of the head. 